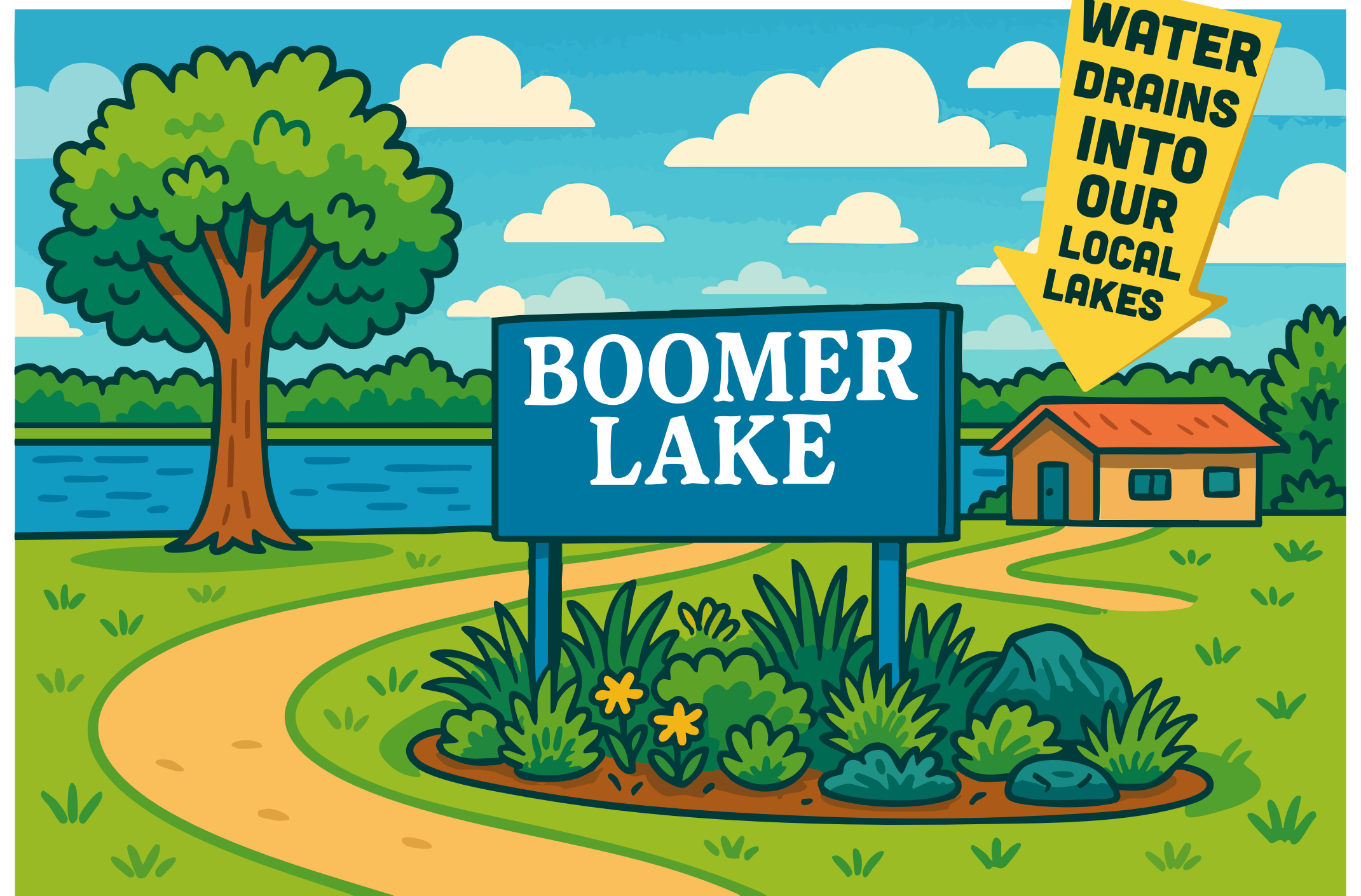


STORMWATER POLLUTION & OUR LOCAL WILDLIFE



Stormwater doesn't go to a treatment plant. It flows directly into our local creeks, ponds, and lakes – like Boomer Lake or Stillwater Creek.



Oil, pesticides, fertilizers, and pet waste can wash off our streets and yards, polluting the water and putting frogs, fish, turtles, and even birds at risk.

WHAT FLOWS DOWN OUR STORM DRAINS ENDS UP IN THEIR HOMES!

1

CLEAN YOUR PRIVATE DRAINS

It's up to you to keep ditches, culverts, and drains clear of debris on your property.

2

ONLY RAIN DOWN THE DRAIN

Never dump oil, soap, trash, or anything else into a storm drain.

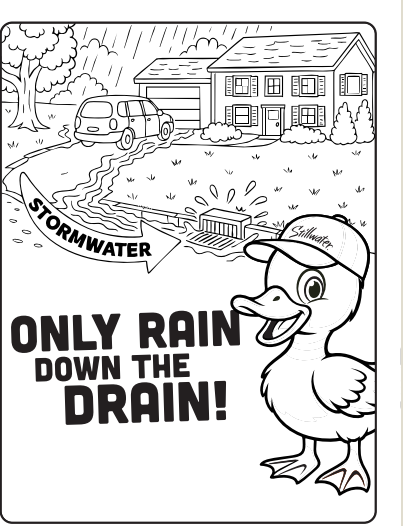
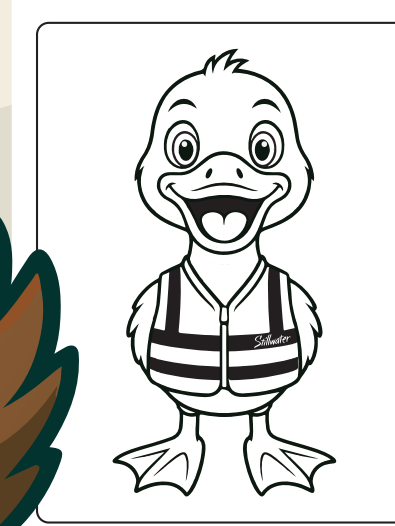
3

PICK UP AFTER YOURSELF

Litter, pet waste, and yard debris all pollute our waterways.



WADDLE YOU DO FOR
CLEAN WATER?



Learn more about
stormwater and
download printable
coloring pages!



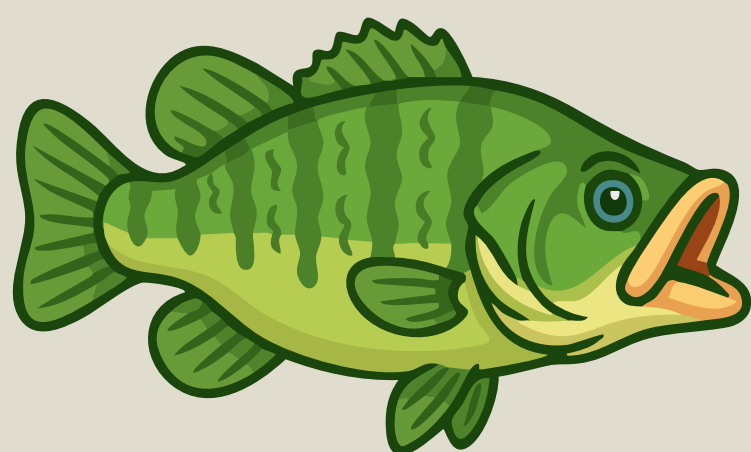
stillwaterok.gov/stormwater

STILLWATER'S AQUATIC WILDLIFE

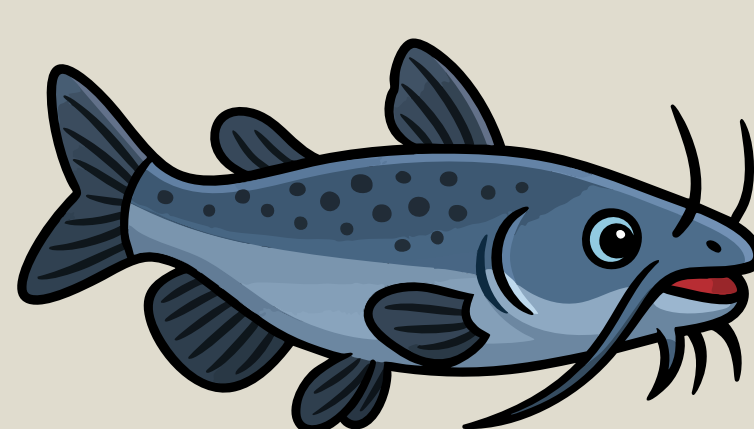
GREEN SUNFISH



LARGEMOUTH BASS



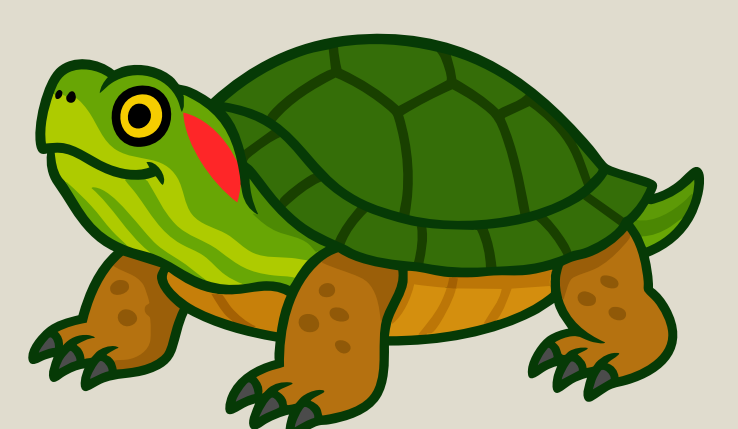
CHANNEL CATFISH



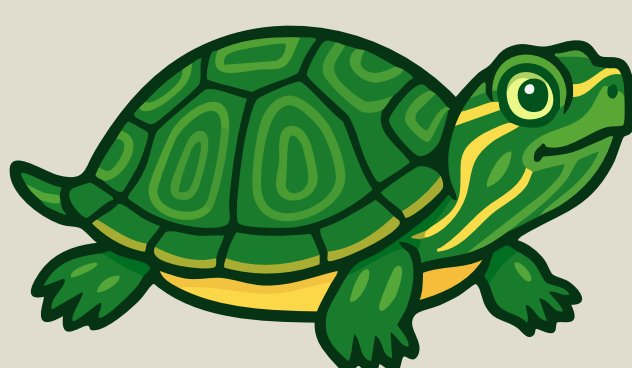
BLUEGILL



RED-EARED SLIDER



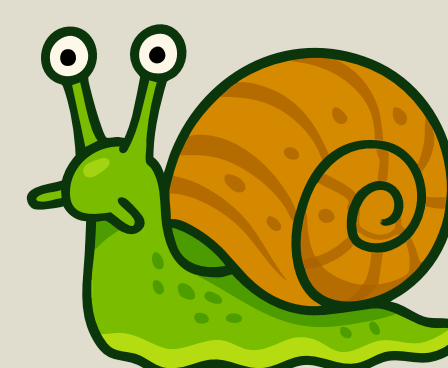
OUACHITA MAP TURTLE



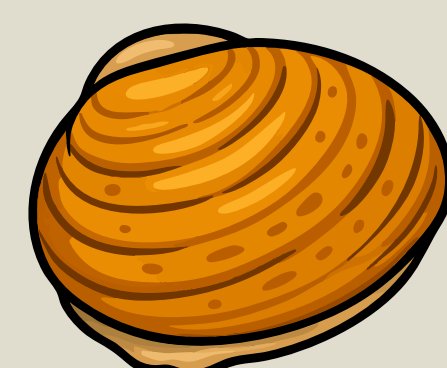
SNAPPING TURTLE



SNAIL



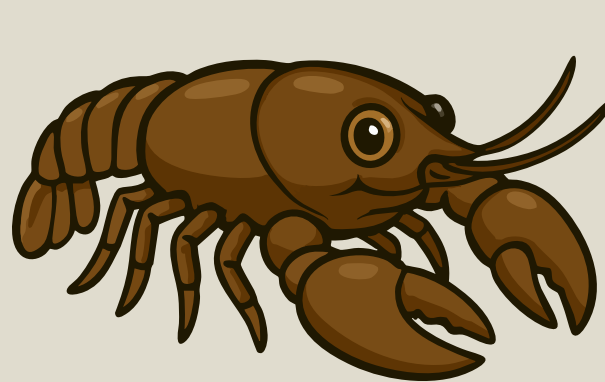
MUSSEL



PLAIN-BELLIED SNAKE



CRAYFISH



BULLFROG



WATER SNAKE



LEOPARD FROG

